

# **Free Password Manager Help**

Version 1.0

# Table of Contents

<b>Part 1 License</b>	<b>1</b>
<b>Part 2 Quick Start</b>	<b>2</b>
<b>Part 3 Working with Free Password Manager</b>	<b>4</b>
<b>1 Working with databases</b> .....	<b>5</b>
Database settings .....	7
General .....	8
Parameters.....	9
Backup .....	10
Exporting a database to file .....	11
Importing data from file .....	12
Synchronizing database .....	13
Additional information .....	14
<b>2 Working with records</b> .....	<b>15</b>
Copying password to clipboard .....	17
Adding custom icons .....	18
Setting up columns' appearance .....	19
<b>3 Printing</b> .....	<b>20</b>
<b>4 Customizing the fields' structure</b> .....	<b>21</b>
<b>5 Password generator</b> .....	<b>23</b>
<b>6 Install to removable device Wizard</b> .....	<b>25</b>
<b>7 Viewing Action log</b> .....	<b>28</b>
<b>8 Configuration of Free Password Manager</b> .....	<b>30</b>
General .....	31
Appearance .....	32
Security .....	33
Locations .....	34
Backup .....	35
<b>9 Command line parameters</b> .....	<b>36</b>
<b>10 Setup program's command line parameters</b> .....	<b>37</b>
<b>Part 4 Technical support</b>	<b>38</b>

---

# 1. License

## SOFTWARE LICENSE AGREEMENT

You should carefully read the following terms and conditions before using the software.

### LICENSE AGREEMENT

This is the End User License Agreement (the "AGREEMENT") is a legal agreement between you ("LICENSEE"), the end-user, and Soft-o, the manufacturer and the copyright owner, for the use of the "Free Password Manager" software product ("SOFTWARE").

By installing, copying, or otherwise using the SOFTWARE, you agree to be bound by the terms of this EULA. If you do not agree to the terms of this EULA, do not install or use the SOFTWARE.

### FREEWARE

You may use the SOFTWARE without charge. We may place announcement of other products into SOFTWARE.

### DISTRIBUTION

You may make copies of the SOFTWARE as you wish; give exact copies of the original SOFTWARE to anyone; and distribute the SOFTWARE in its unmodified form via electronic means. You may not charge any fees for the copy or use of the SOFTWARE itself. You must not represent in any way that you are selling the SOFTWARE itself. Your distribution of the SOFTWARE will not entitle you to any compensation from Soft-o. You must distribute a copy of this EULA with any copy of the SOFTWARE and anyone to whom you distribute the SOFTWARE is subject to this EULA.

### RESTRICTIONS

You may not reverse engineer, de-compile, or disassemble the SOFTWARE.

You may not rent, lease, or lend the SOFTWARE.

You may permanently transfer all of your rights under this EULA, provided the recipient agrees to the terms of this EULA.

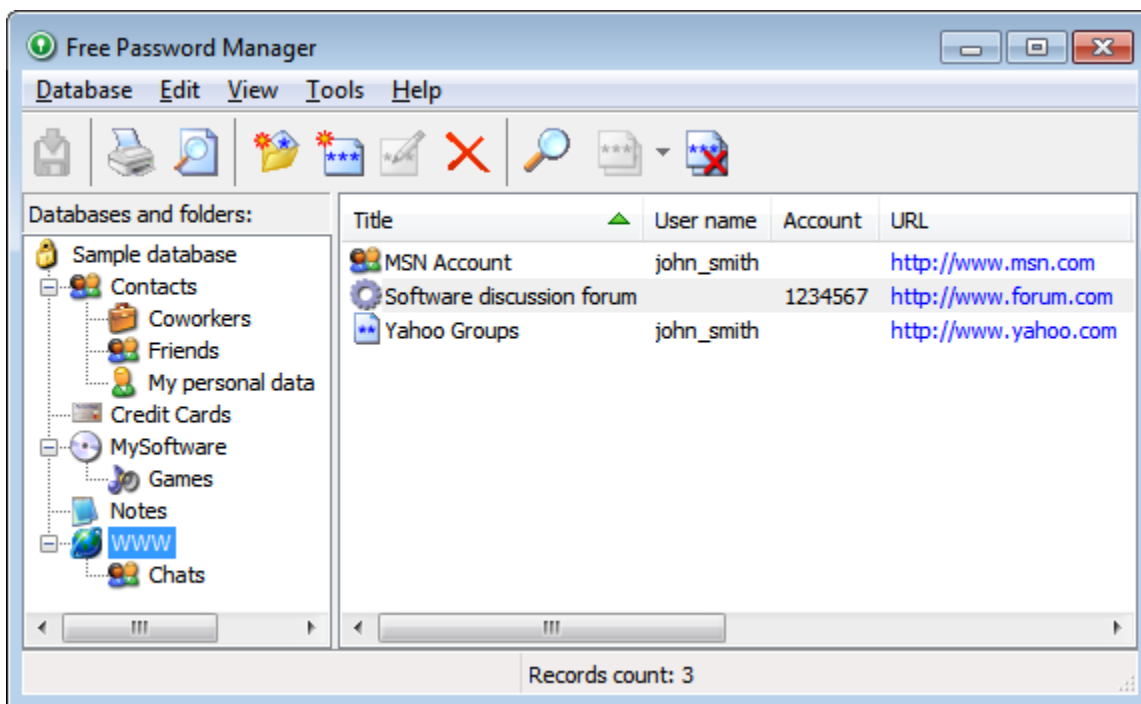
You may not use the SOFTWARE to perform any unauthorized transfer of information or for any illegal purpose.

### DISCLAIMER

THIS SOFTWARE IS PROVIDED ON AN "AS IS" BASIS WITHOUT WARRANTY OF ANY KIND, EXPRESSED OR IMPLIED, INCLUDING BUT NOT LIMITED TO THE IMPLIED WARRANTIES OF MERCHANTABILITY AND SUITABILITY FOR A PARTICULAR PURPOSE. THE PERSON USING THE SOFTWARE BEARS ALL RISK AS TO THE QUALITY AND PERFORMANCE OF THE SOFTWARE. Soft-o WILL NOT BE LIABLE FOR ANY SPECIAL, INCIDENTAL, CONSEQUENTIAL, INDIRECT OR SIMILAR DAMAGES DUE TO LOSS OF DATA OR ANY OTHER REASON, EVEN IF Soft-o OR AN AGENT OF Soft-o HAS BEEN ADVISED OF THE POSSIBILITY OF SUCH DAMAGES. IN NO EVENT WILL Soft-o BE LIABLE FOR COSTS OF ANY DAMAGES, EXCEEDING THE PRICE PAID FOR THE SOFTWARE LICENSE, REGARDLESS OF THE FORM OF THE CLAIM. YOU ACKNOWLEDGE THAT YOU HAVE READ THIS LICENSE, UNDERSTOOD IT, AND AGREED TO BE BOUND BY ITS TERMS.

## 2. Quick Start

This topic briefly overviews the main commands. It is made to help you get started with Free Password Manager quickly. This topic is recommended for reading to both newbies and advanced users.



### Creating databases and folders with required fields structure

Do not use the sample database for storing your data. Once the program is installed, please [create a new database](#) and set a strong hacker-proof password for it.

**NOTE:** The password must be of at least 8 characters long and contain numbers, caps and lower case letters, and punctuation characters.

Create a folders structure for storing your data. Create a required [field structure](#) and [list columns to be displayed](#) for each folder. The field structure can be [copied](#) from the sample database. To have that done, simply copy the folder to your database and delete the demo records from it.

### Importing data to the program

Once your database and folders structure are created, you can [import your data](#), if you have them stored in a text file with delimiters or in the **.csv** format (Excel can save data to **.csv** files). First, select the folder to import the data to, and then select the **Database > Import from file...** item on the menu.

### Configuring backup

By default, Free Password Manager always backs up databases automatically before saving them. Make sure you have properly configured the backup settings and noted where backup copies are stored to avoid the loss of data. The best place for keeping your backup folder is in a secure place on your computer's hard drive. You can configure the [backup's general settings](#) to have them applied to all databases. You can as well define [backup settings for each database individually](#).

### Installing the program on a USB flash disk and synchronizing databases

If you use several computers, you can choose to install the program on a **USB flash disk** ([removable device](#)) for more convenience. This way, you will always have access to your data and will be able to run the program on any computer, without having to install it first. There are several ways the program can be used:

1. Always run the program on the **USB flash disk**. The database is stored on the same disk.
2. Run the program installed on your computers (home computer, office computer, laptop) and then set the program to use the [database stored](#) on the **USB flash disk**.
3. Run the program installed on your computers and use the local database. To maintain the freshness of the data, [synchronize](#) data in the local databases with the one stored on the **USB flash disk**.

## 3. Working with Free Password Manager

[Quick Start](#)

[Working with databases](#)

[Working with records](#)

[Printing](#)

[Customizing the fields' structure](#)

[Password generator](#)

[Install to removable device Wizard](#)

[Viewing Action log](#)

[Configuration of Free Password Manager](#)

[Command line parameters](#)

[Setup program's command line parameters](#)

## 3.1. Working with databases

List of all your databases is displayed in the left part of the program's window. The icon which shows current state of the database is shown to the left of the database name. In case the icon is gray the database is closed, when it's yellow - opened.

### Opening a database

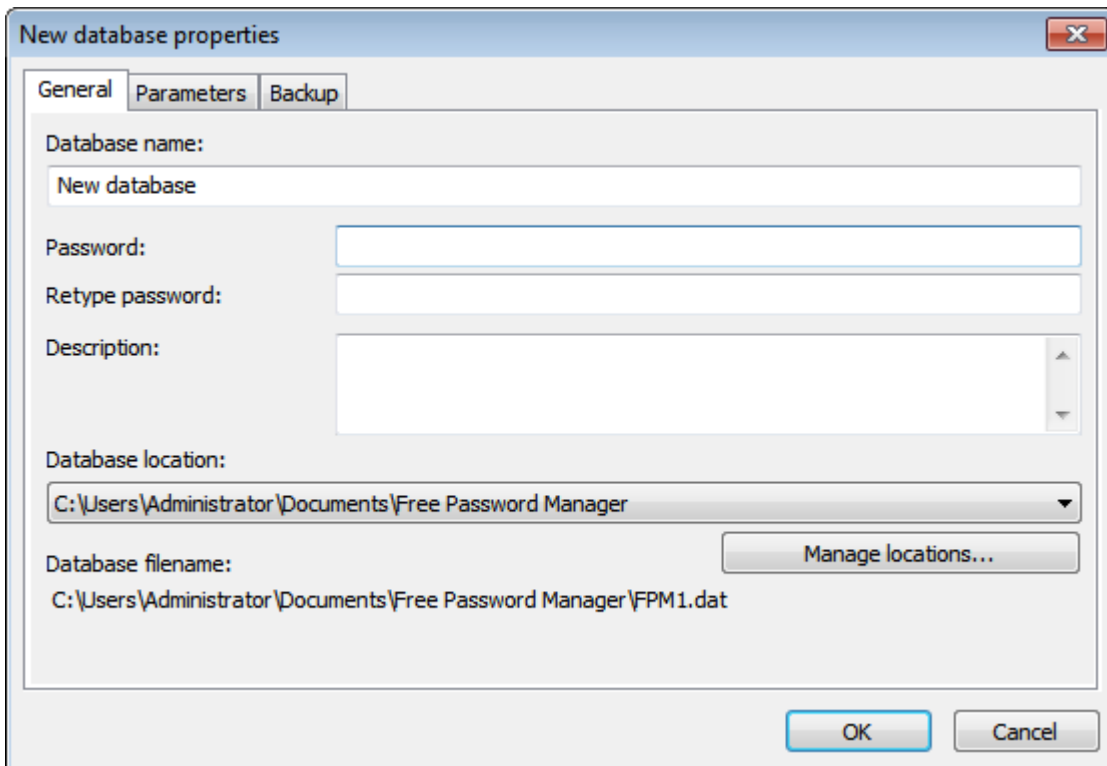
To open database doubleclick on the needed database and enter the password in the displayed window. Also database can be opened through **Database > Open** menu or popup menu which can be invoked by clicking right mouse button.

**NOTE:** If you open a database that already opened at other computer in write mode then this database will be opened in the **read only** mode.

If you need true multi-user password manager, use [Crypt-o](#) product.

### Creating new database

To create new database select menu **Database > Create new....** Then choose database name, password in the popup window. You can specify folder where this database will be stored. See [Database settings](#) topic for more information.




### Changing settings of your database

To change settings of a database select menu **Database > Properties....** Then change required settings in the popup window. You can change database's name, password, folder where this database will be stored. See [Database settings](#) topic for more information.


### Saving changes in a database

After making some changes in your database save them, otherwise the changes will be lost. To save changes press **Save** button on the toolbar or select menu **Database > Save**. While closing database or the program itself you'll be automatically prompted to save all recently made changes into your database(s).

 **NOTE:** By default automatic backup copy is made before each save of a database. To setup autobackup parameters see [Configuration of Free Password Manager - Backup](#) and [Database settings - Backup](#) topics.

### Deleting a database

If you want to delete some database you need to open database and select **Edit > Delete** menu item and confirm the operation in the popup window.

 **NOTE:** To delete an inaccessible database you need to delete its file. To do that select the database and choose **Tools > Go to databases folder** menu item. Explorer window will be opened and database file will be selected. The file will be in following format: FPMX.dat (where X is some number). Just delete the selected file and the database will be removed from Free Password Manager.

### Backup of a database

If you want to backup some database menu **Database > Backup...** and choose name and location of the backup file in the popup window.

### Restoring database from backup

To restore database from backup select menu **Database > Restore...** Then choose backup file to be restored in the popup window and press **Open** button. If database to be restored is already exists then you will be prompted to overwrite it or to restore as new database.



---

### 3.1.1. Database settings

To access database settings first open the database. Then choose **Database > Properties...** menu item. Database settings are divided into the following pages:


[General](#)

[Parameters](#)

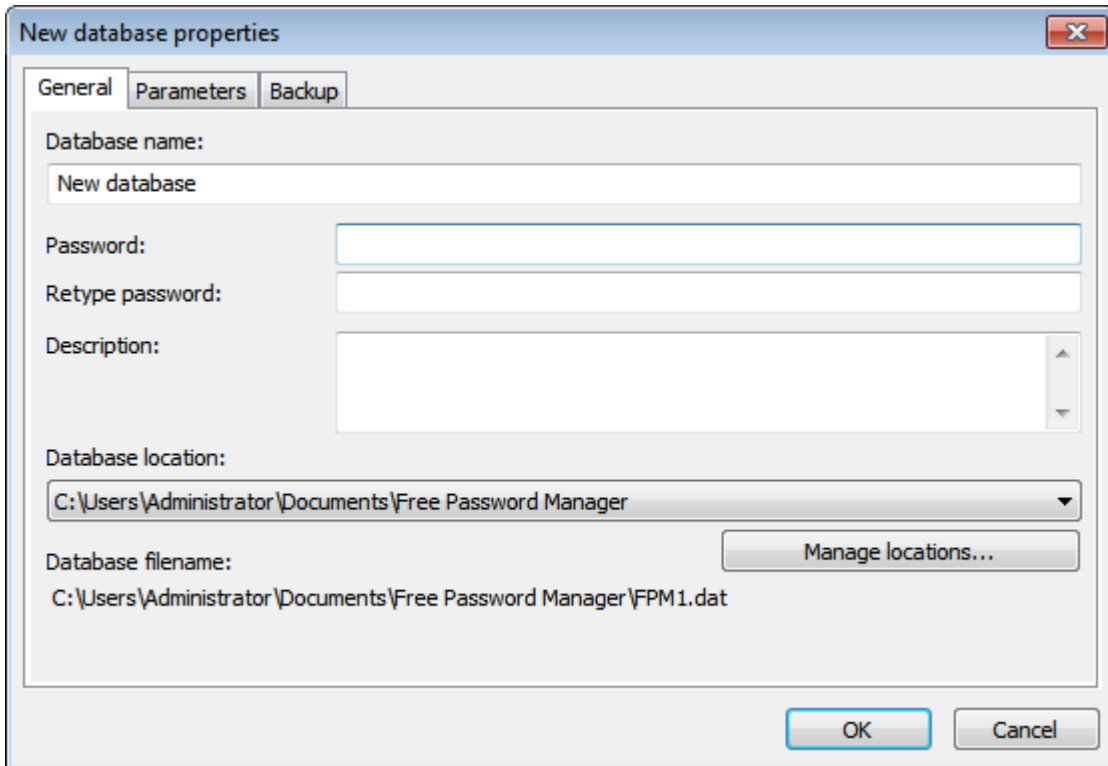
[Backup](#)

3.1.1.1. General

- **Database name** - database name.
- **Password** - password for accessing the database.

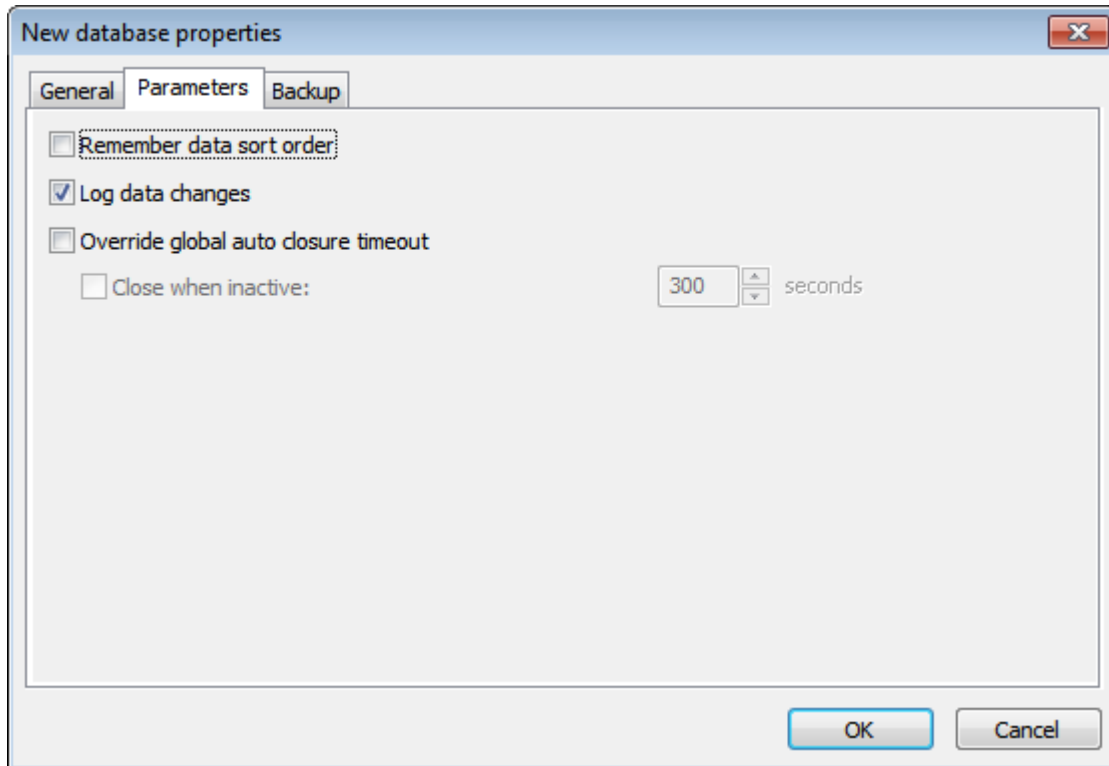
 **NOTE:** The password must be of at least 8 characters long and contain numbers, caps and lower case letters, and punctuation characters.

- **Retype password** - repeat the password to make sure it is entered correctly.
- **Description** - database description (optional).
- **Database location** - path / folder where the database file is stored (use the **Manage locations...** button to adjust the setting. See also: [Locations](#)).
- **Database filename** - full database file name, including path and file extension. Provided for the information purposes.



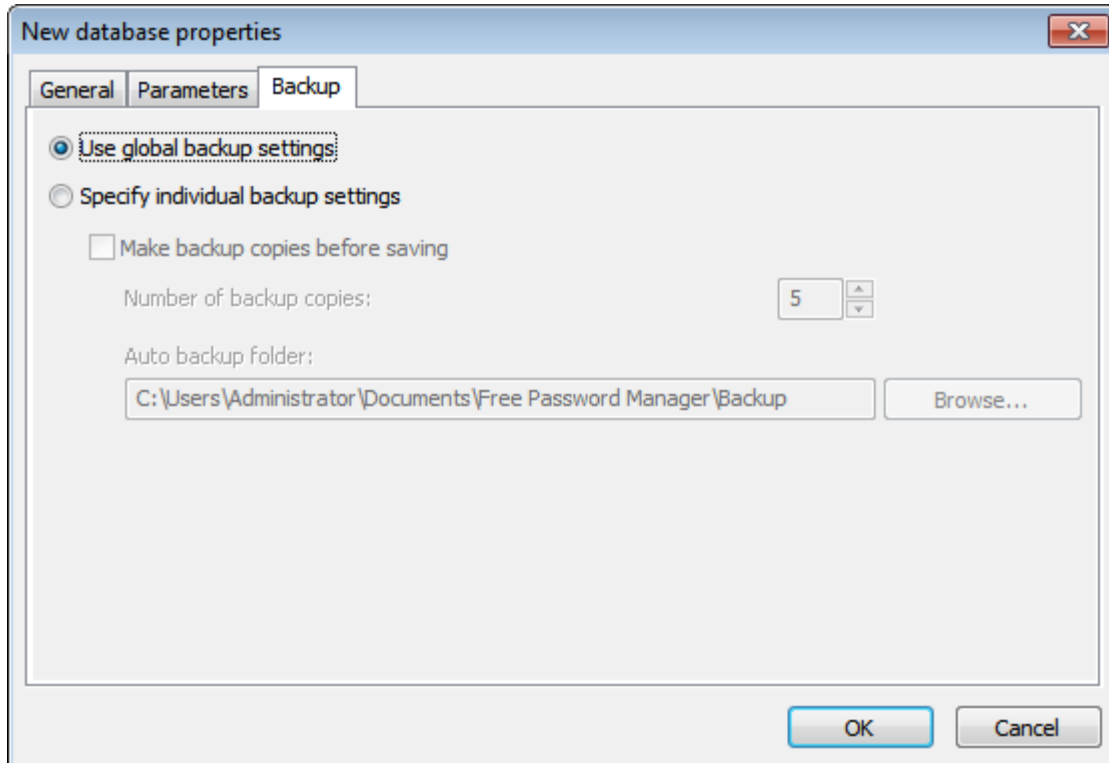
### 3.1.1.2. Parameters

- **Remember sort order** - sorting order in folders is remembered when database is saved.
- **Log data changes** - log data changes to maintain the history of changes. This option is to be selected if you want to use the [database synchronization function](#).
- **Override global auto closure timeout** - overriding global timeout setting for the automatic database closure on idleness (see the [Security](#) topic).
- **Close when inactive** - this option forces the automatic closure of databases after the database has been idle a certain period of time. A database will be closed if it has been inactive for this period of time.



### 3.1.1.3. Backup

- **Use global backup settings** - when this option is selected, the program will use the global backup settings ( see [Backup](#) topic).
- **Specify individual backup settings** - when this option is selected, the program will use custom backup settings provided for this particular database.
- **Make backup copies before saving** - when this option is selected, the program will backup database every time before it saves changes.
- **Number of backup copies** - sets the number of backup copies to maintain.
- **Auto backup folder** - specifies folder where backup copies will be stored.

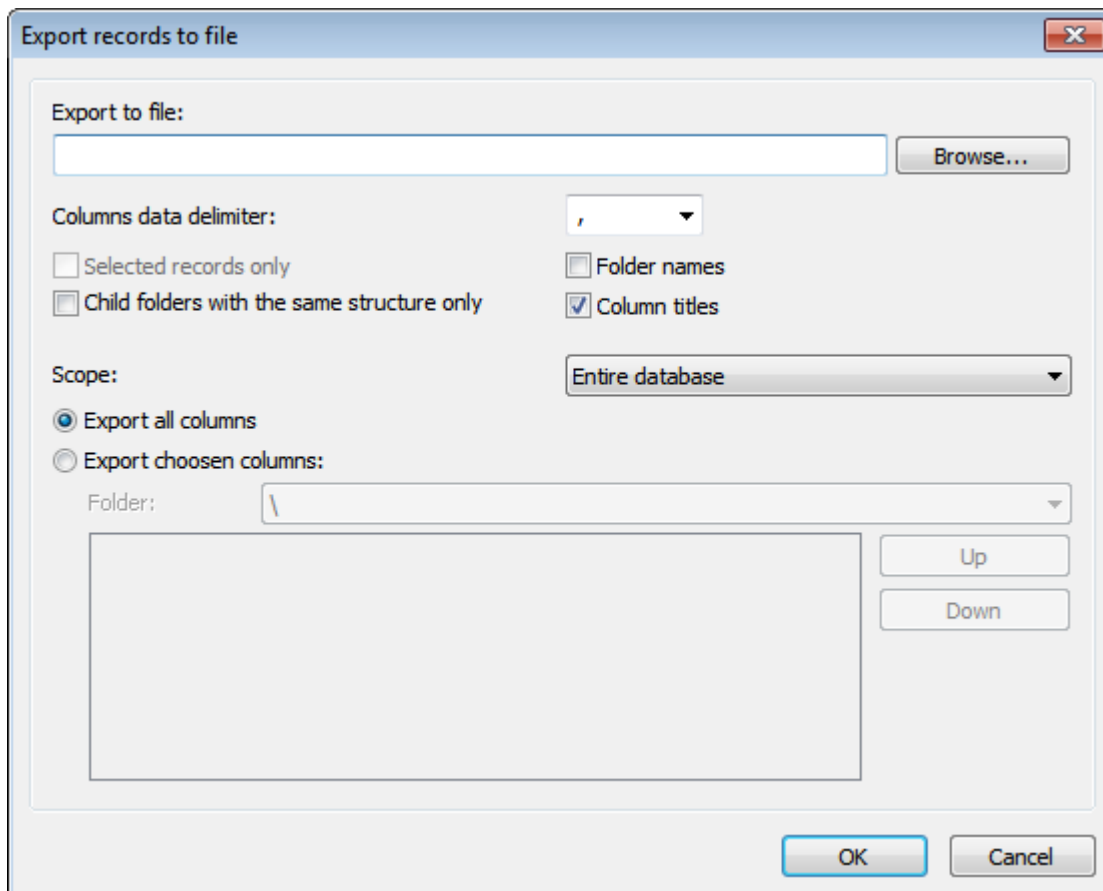


### 3.1.2. Exporting a database to file

To export database records to a file select **Database > Export to file...** menu. Export options window will appear. Press **Browse...** button and choose the target file and its type - CSV file or TXT file.

The following export options are available:

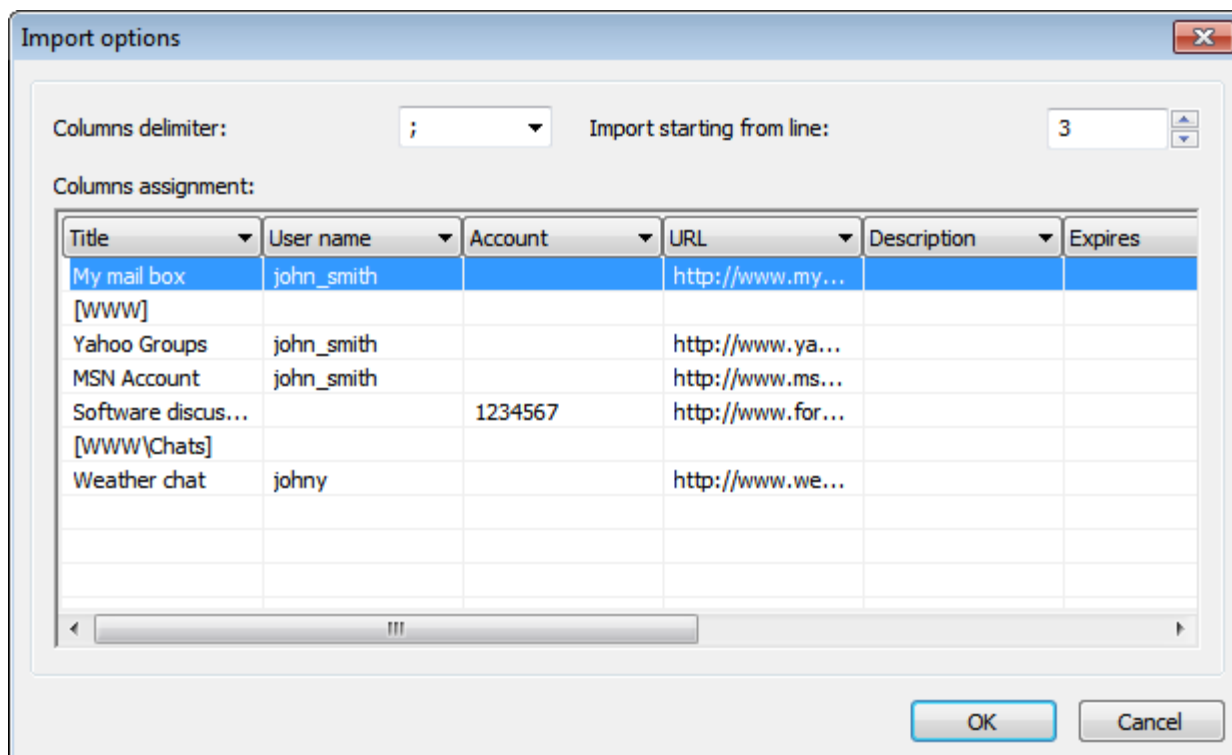
Option	Description
Column delimiter	One or more character(s) are used to separate columns data.
Selected records only	If checked, currently selected records will be exported only.
Child folders with the same structure only	Child folders which have the same fields structure as root folder will be exported only.
Folder names	If checked, the folder names will be exported.
Column titles	If checked, the column titles will be exported.
Scope	Scope of export (Entire database, Current folder only, Current folder and all child folders).
Export all columns	All data fields will be exported.
Export chosen columns	List of columns to be exported.



### 3.1.3. Importing data from file

Free Password Manager can import data from text files with delimiters and from **.csv** files (these ones can be created with Excel).

To import data from file, select the folder where the program is to place records to be imported. Then select **Database > Import from file...** on the menu. In the window that appears, select the file to import data from. That will be followed by the import settings window. In that window, specify the **Columns delimiter** being used in the file, the line, from where data is to be imported, and the fields to read data from. Use the data preview to adjust the import parameters. When you are finished with the settings, click **OK**.

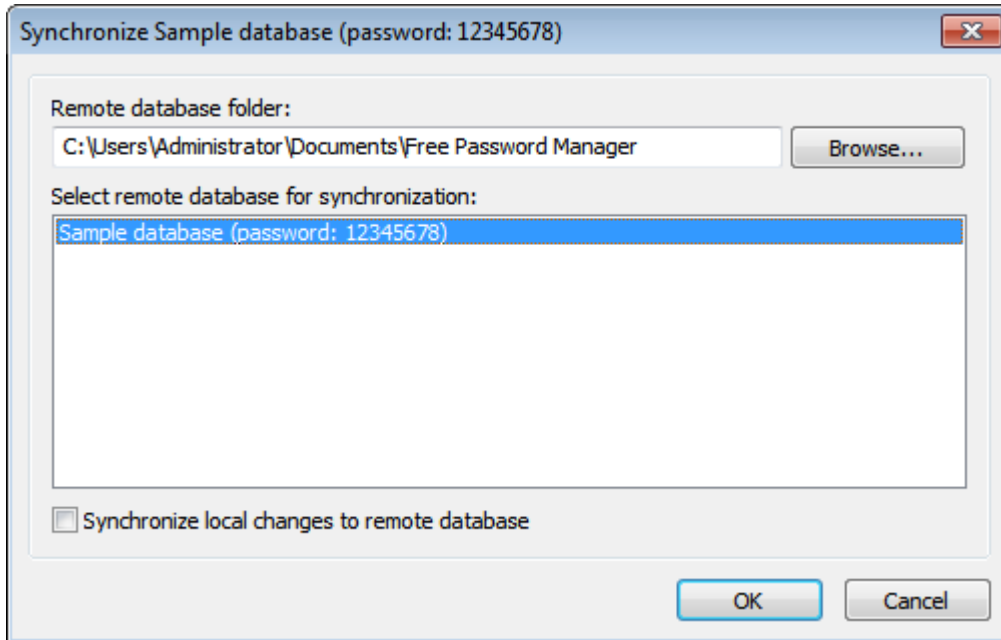


### 3.1.4. Synchronizing database

Free Password Manager can synchronize databases. To use this function, make sure that both databases participating in synchronization have the **Log data changes** parameter in database properties enabled.

To synchronize current (local) database with another (remote) database, select **Database > Synchronize...** on the menu. In the window that appears, select the folder where the remote database is stored, then select the database and click **OK**.

**Synchronize local changes to remote database** - when this option is enabled, the program will perform the two-way synchronization of changes in both local and remote databases; i.e. when the synchronization is over, both databases will be fully identical.



To synchronize database on a local computer with one on a **USB flash disk**, use the [Install to removable device Wizard](#) or [Quick install to removable device](#) functions.

1. Make sure that data changes logging is enabled for a database. To do that open [database properties](#) and make sure that **Log data changes** option is turned on at [Parameters](#) page.
2. Install Free Password Manager to removable device using [Install to removable device Wizard](#) and make sure that the database will be installed at the device as well.
3. Now you can take you removable device with you and make changes into the database stored at the device. Also the local database can be changed.
4. It is time to synchronize both local and remote databases. Plug the device into PC. Use [Install to removable device Wizard](#) at PC again, choose to install the same database and make sure that **Synchronize database before overwriting** option is set in the Wizard.
5. Wizard will apply remote changes to the local database and then copy synchronized database to the removable device.
6. Now you have 2 identical databases at both locations (PC and removable device).

### 3.1.5. Additional information

All data inside the database is firstly compressed with **zip** compression method and then is encrypted using AES algorithm. At the same time information about record expiration date is not involved in the encryption process, so that the database can be easily checked for expired passwords without knowing the database's password.



## 3.2. Working with records

### Creating new record

To create new record press **Create new record** button on the toolbar or select menu **Edit > New record**. The new record window will appear. Enter the data in the corresponding fields at your discretion. See the [Customizing the fields' structure](#) topic to find out how to setup fields for entering data of different types.

Each record has the expiration date field. When a record expires, Free Password Manager will notify you of that, and you will be able to perform the required actions (e.g., change password).

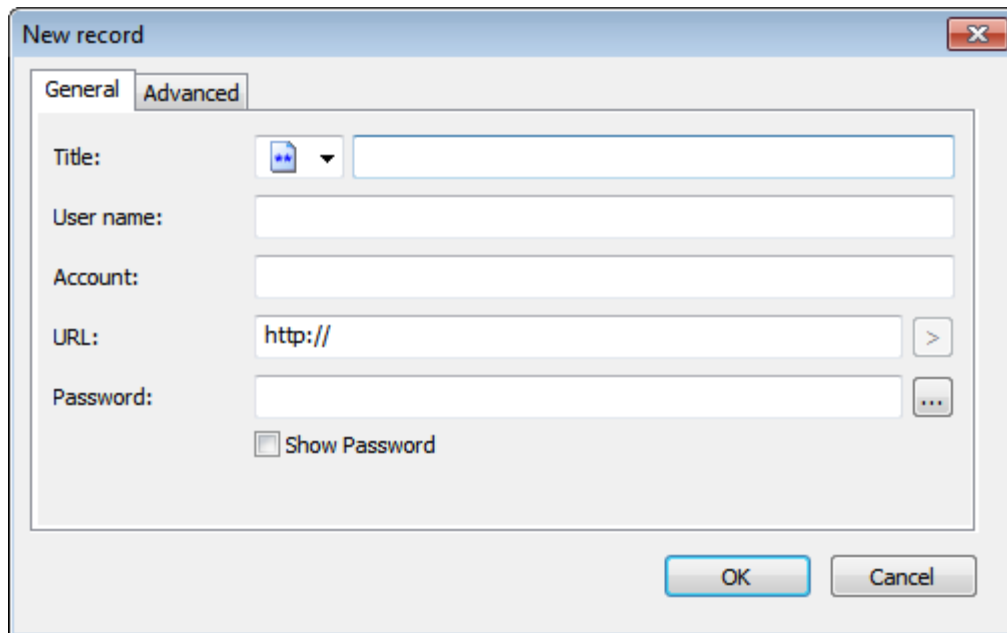
[Password generator](#) can be used for generating strong passwords. In order to do so press the button to the right of the password edit box.

Fields of type **URL** can be used to store links to the following objects:

- Web page address ( `http://www.soft-o.com` ).
- E-Mail address ( `mailto:support@soft-o.com` ).
- Local folder or file ( `C:\Program Files` or `C:\My Documents\Price.txt` ).
- Remote folder or file ( `\\Sever\Share` or `\\Sever\Share\readme.txt` ).
- Executable file with command line parameters ( `notepad.exe c:\readme.txt` ). It is needed to specify **.exe** extension for executable file.

You can set an image to appear on the records list for each record. At your discretion, you can assign images for records from the collection provided by the program or add your own images. See [Adding custom icons](#) topic for more information.

Finally press **OK** to save the record.



### Editing record

To edit record double click on it or press **Edit selected record** button on the toolbar or select **Edit > Edit record** menu item. When the window popups change the required data in input fields. See [Creating new record](#) chapter for more information. Press **OK** to save changes.

The screenshot shows a dialog box titled "VISA CLASSIC - CITY BANK". It has two tabs: "General" and "Advanced". The "General" tab is selected. The fields are as follows:

- Title: VISA CLASSIC - CITY BANK
- Name: JOHN SMITH
- Card number: 9922 7017 2069 3344
- Expires: 2/15/2010 in days
- CVV2: \*\*\*\*\* (with a "Show CVV2" checkbox below it)
- PIN code: \*\*\*\*\* (with a "Show PIN code" checkbox below it)

At the bottom right, there are "OK" and "Cancel" buttons.

### Selecting several records

Sometimes it is needed to delete/move/copy several records at the same time. To select several records hold down **Ctrl** key and select records with mouse. To select a range of records click on the first record, hold down **Shift** key and click at the last record of the range. When the records are selected you can do the required operation.

### Deleting record(s)

To delete selected record(s) press **Delete selected item** button on the toolbar or select menu **Edit > Delete**. Confirm the operation in the popup window.

### Moving record(s)

To move selected record(s) drag and drop the given element(s) to the new place. Also you can choose **Edit > Cut** menu item or press **Ctrl+X** key combination. Then open target folder and choose **Edit > Paste** menu item or press **Ctrl+V** key combination.

### Copying record(s)

To copy selected record(s) drag and drop the given element(s) to the new place while holding **Ctrl** key. Also you can choose **Edit > Copy** menu item or press **Ctrl+C** key combination. Then open target folder and choose **Edit > Paste** menu item or press **Ctrl+V** key combination.

### Cloning record

To create a new record based on an existing one, select the original record and then select **Edit > Clone record...** on the menu. The new record window will appear; data from the selected record will be pasted to the new record form automatically.

### Undo changes

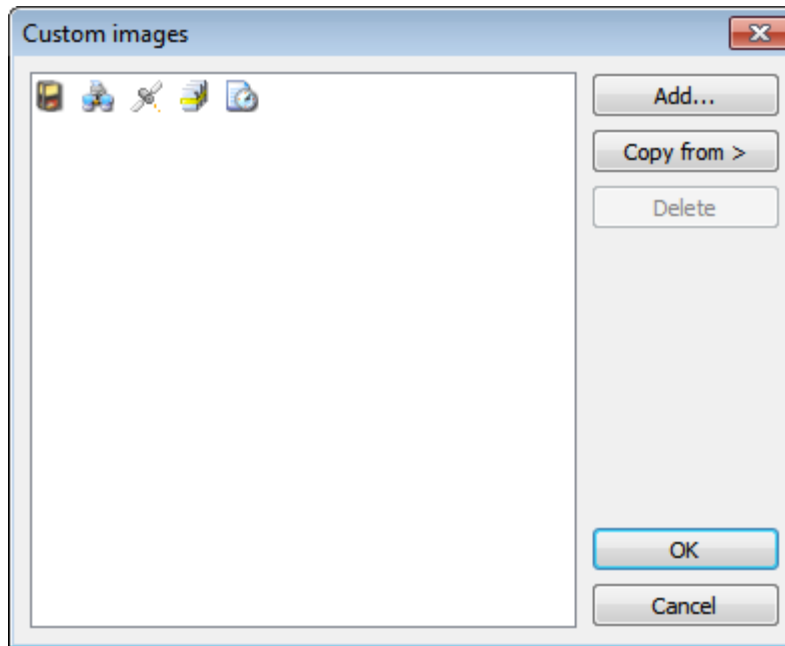
To undo changes choose **Edit > Undo** menu item or press **Ctrl+Z** key combination.

### 3.2.1. Copying password to clipboard

If you want to copy password of the selected record to clipboard simply press **Copy password to clipboard** button on the toolbar or select the corresponding element from the popup menu. The password then can be pasted from the clipboard to any application, but only once. Contents of **user name** field of same record are copied in the clipboard also. Thus, the password is pasted at the first paste, and the user name - at subsequent paste. After that these data become unavailable to paste. Also the password will be unavailable to paste if not pasted within 1 minute. Once you need to paste it again you'll have to repeat the procedure (copy the password to clipboard). When program quits you won't be able to paste the password or user name any more.

### 3.2.2. Adding custom icons

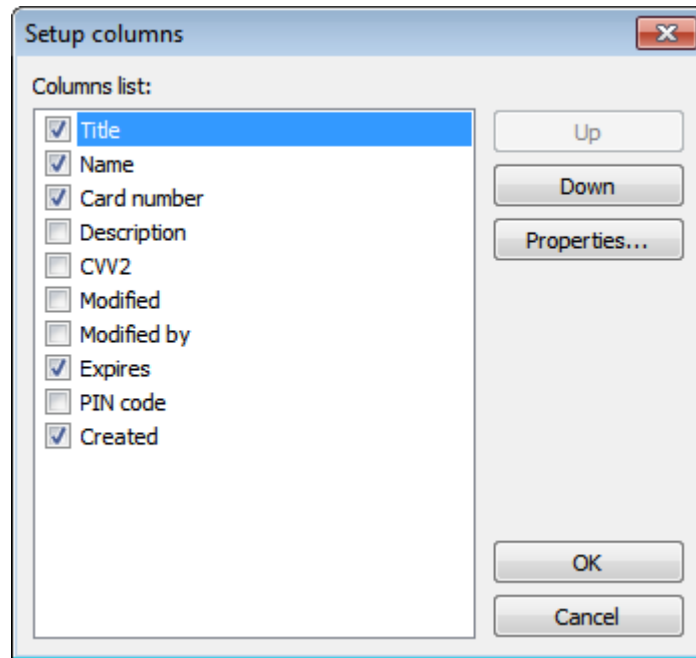
Free Password Manager allows adding custom images to records. Open the record for editing. In the window that appears, click on the image selection combo box and then click on the **Customize...** button. That will open the **Custom images** window.



In this window, you can add, remove custom images from files, and copy custom images from other Free Password Manager databases. The program supports two image formats: **\*.ico** and **\*.bmp**. All images will be resized to 16x16 pixels; therefore, it is better to have the original images prepared in the 16x16 pixels format. Use the **Copy from** button to copy images from other open Free Password Manager's database.

### 3.2.3. Setting up columns' appearance

Each folder in the program can have its own list of columns and the order how they are to appear on the list. To customize that, select **Tools > Setup columns...** on the menu. In the window that appears, set the columns to be displayed and the order they are to follow by using the **Up** and **Down** buttons. Click on the **Properties...** button to change the selected column's title and width.



### 3.3. Printing

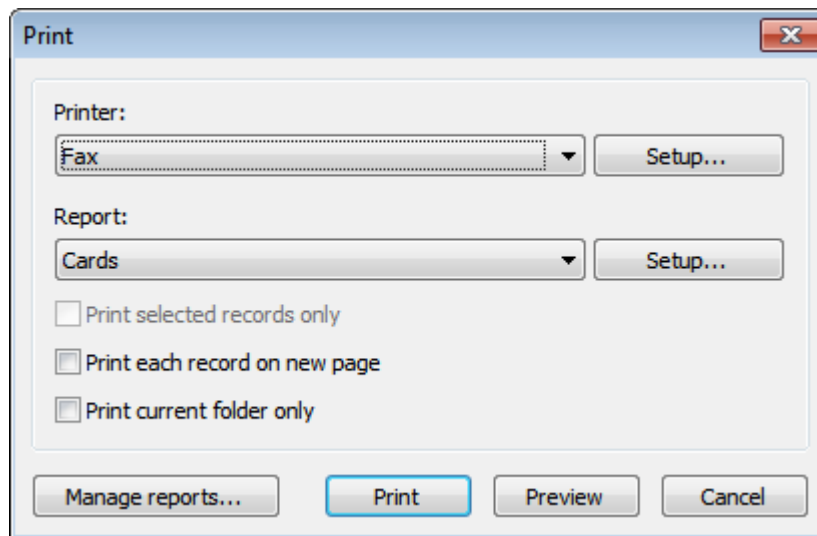
Free Password Manager allows you to print your data. You can either print data stored in your current folder or print all data stored in the database. There are options to print data as a table or as a card (form). In addition, you can create your own report templates with report name, columns to be printed, their titles, width, length, sequence, format and other parameters. Page orientation (portrait or landscape) can be specified as well.

#### Printing data from current folder

In order to print data from a folder, select it and press the **Print** button. To see how the data will look like when printed out, press the **Print preview** button.

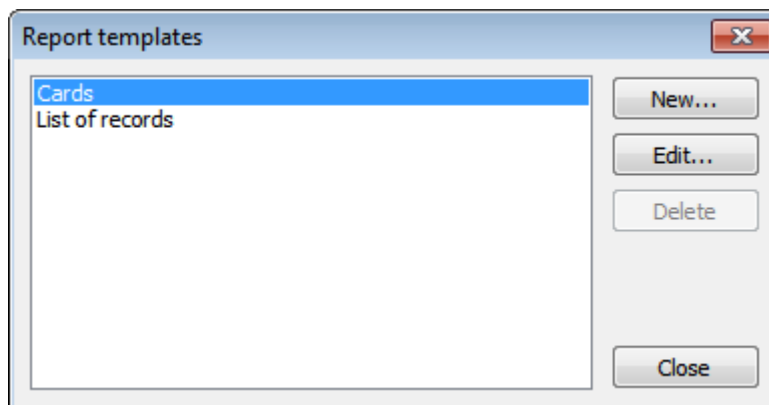
#### Printing the entire database

To print the entire database, select the **Database > Print...** menu item, and choose the report template and printing parameters. Then, press **Print** or **Preview** to see how your report will look like.



#### Creating report templates

To create a new report template, select the **Database > Print...** menu item and press the **Manage reports...** button. The window that appears will let you create, edit or delete report templates. To create a new template, press **New...** button and then enter template parameters, like the template name, columns to be printed and their parameters, etc. The **Layout** tab lets you set page orientation (portrait or landscape) and report format (table or cards).

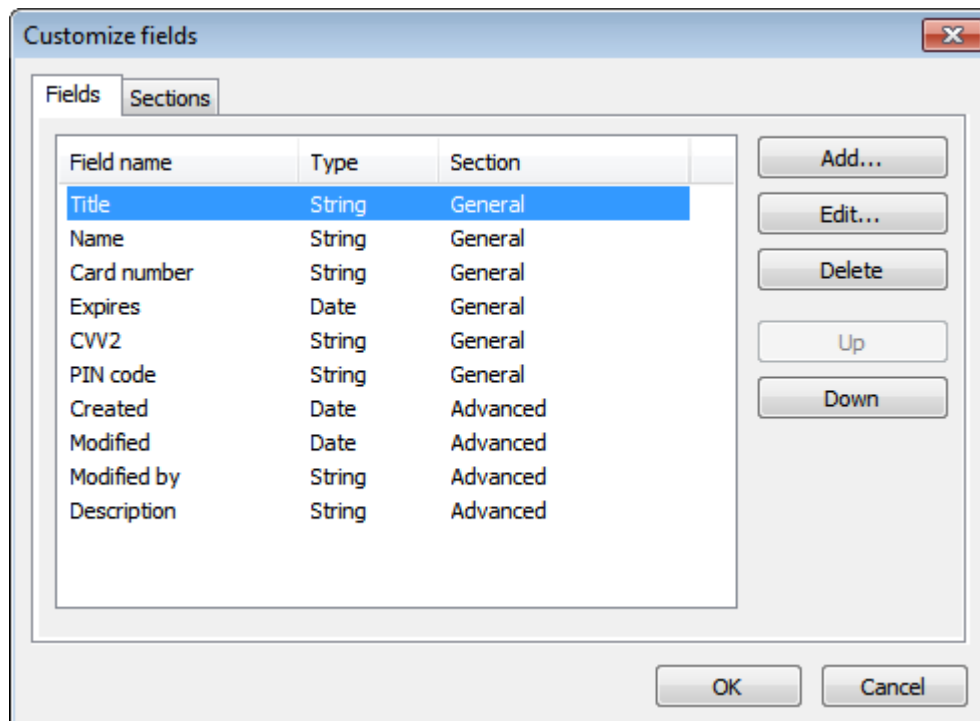


### 3.4. Customizing the fields' structure

You can customize the data fields' structure in the database for each folder or a group of folders, at your own discretion. Which means that you can create the folders for storing various data types, such as: credit cards, notes, passwords, contacts, software support e t.c. The fields' list is unlimited. The fields may be of various types and may be arranged in the editing window in the required way and on the specified tabs. At any time, you can modify the fields' naming and the arrangement order with no data loss.

To adjust the fields' structure, highlight the required folder and select the **Edit > Customize fields...** menu item. If the folder inherits its structure from a parent folder, a confirmation window appears. Press **Yes** to create an independent fields' structure for this folder and all of its subfolders; press **No** to edit the structure of the parent folder.

When you're done, a fields' structure editing window appears. This window has two tabs: **Fields** and **Sections**.



The **Sections** tab is designed for setting a list of sections, which are intended for fields grouping. Each section constitutes a tab in the records editing and creating window. The tabs are arranged in the same order, as the sections in the list.

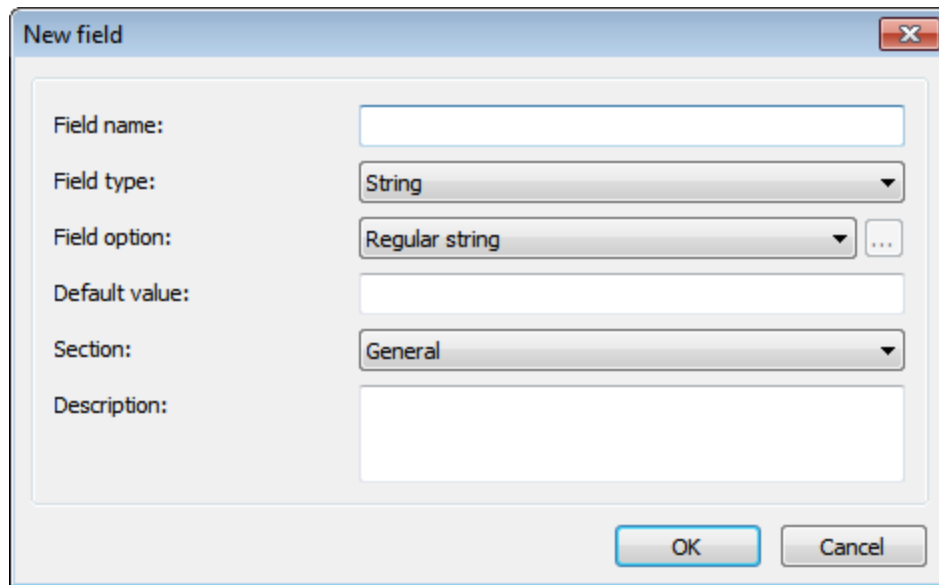
At the **Fields** tab, you can set a full list of the data fields. Each field is assigned a section, determining the tab, which the field will be located at in the records editing and creating window.

If there is only one section or no sections, the records editing window will contain no tabs.

There also are a few mandatory fields, which cannot be removed, such as: **Created**, **Modified**, **Modified by** and **Expires**.

The following fields' structure editing actions are available:

- **Add...** - add a field;
- **Edit...** - edit the field's properties;
- **Delete** - delete a field;
- **Move Up** - move a field one position up;
- **Move Down** - move a field one position down.



The image shows a 'New field' dialog box with the following fields and options:

- Field name: [Text input field]
- Field type: [String] (dropdown menu)
- Field option: [Regular string] (dropdown menu) with a '...' button to the right.
- Default value: [Text input field]
- Section: [General] (dropdown menu)
- Description: [Text area]

Buttons: [OK] [Cancel]

Each field has the following parameters:

- **Field name** - the field's title, which is going to be displayed in the records editing window and in the table's title;
- **Field type** - the field's type: **String**, **Date**, **Integer**, **Float** or **Checkbox**;
- **Field option** - an option for the **String**-type field: **Regular string**, **Password field**, **Multiline text**, **Clickable URL** or **Predefined values**;
- **Default value** - a default value for a field;
- **Section** - the section, which this field is going to be located at;
- **Description** - the description of this field, if required.



### 3.5. Password generator

Random password generator has the following options:

Option	Description												
Lower case letters (a-z)	Latin lower case letters <b>a-z</b> will be used for password generation.												
Upper case letters (A-Z)	Latin upper case letters <b>A-Z</b> will be used for password generation.												
Digits (0-9)	Digits <b>0-9</b> will be used for password generation.												
Special symbols (\$,%!,@, ...)	Special symbols <b>~ ! @ \$ % ^ &amp; * ( ) - +   = / : ; [ ] &lt; &gt; , .</b> will be used for password generation.												
Custom characters	User defined characters will be used for password generation. Enter needed characters in this input field.												
Exclude characters	The specified characters will be excluded from password generation. Enter needed characters in this input field.												
Password template	<p>It is possible to define the template for password generation. If the template is specified, the password will be generated according to this template.</p> <p>The following characters can be used in the template:</p> <table border="1"> <tbody> <tr> <td><b>a</b></td> <td>the random lower case letter will be placed in this position;</td> </tr> <tr> <td><b>A</b></td> <td>the random upper case letter will be placed in this position;</td> </tr> <tr> <td><b>9</b></td> <td>the random digit will be placed in this position;</td> </tr> <tr> <td><b>\$</b></td> <td>the random special character will be placed in this position;</td> </tr> <tr> <td><b>C</b></td> <td>one of user defined characters, specified in <b>Custom characters</b> input field, will be placed in this position;</td> </tr> <tr> <td><b>"</b></td> <td>quoted text will be placed in the resulting password as is.</td> </tr> </tbody> </table>	<b>a</b>	the random lower case letter will be placed in this position;	<b>A</b>	the random upper case letter will be placed in this position;	<b>9</b>	the random digit will be placed in this position;	<b>\$</b>	the random special character will be placed in this position;	<b>C</b>	one of user defined characters, specified in <b>Custom characters</b> input field, will be placed in this position;	<b>"</b>	quoted text will be placed in the resulting password as is.
<b>a</b>	the random lower case letter will be placed in this position;												
<b>A</b>	the random upper case letter will be placed in this position;												
<b>9</b>	the random digit will be placed in this position;												
<b>\$</b>	the random special character will be placed in this position;												
<b>C</b>	one of user defined characters, specified in <b>Custom characters</b> input field, will be placed in this position;												
<b>"</b>	quoted text will be placed in the resulting password as is.												
Length	The desired length of password.												

Password generator ✕

Password character set

Lower case letters (a-z)       Digits (0-9)

Upper case letters (A-Z)       Special symbols (\$, %, !, @, ...)

Custom characters:

Exclude characters:

Password template:

Password

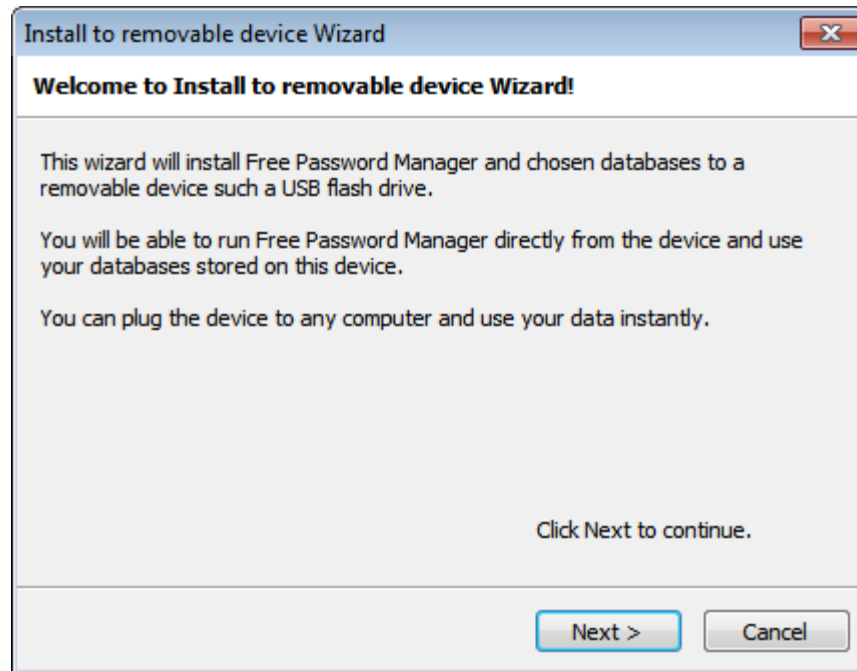
Length:

Password:

### 3.6. Install to removable device Wizard

This wizard installs Free Password Manager and chosen databases to removable devices such as USB flash drives. You will be able to run Free Password Manager directly from the device and use databases stored on this device. You can plug the device to any Windows computer and use your data instantly.

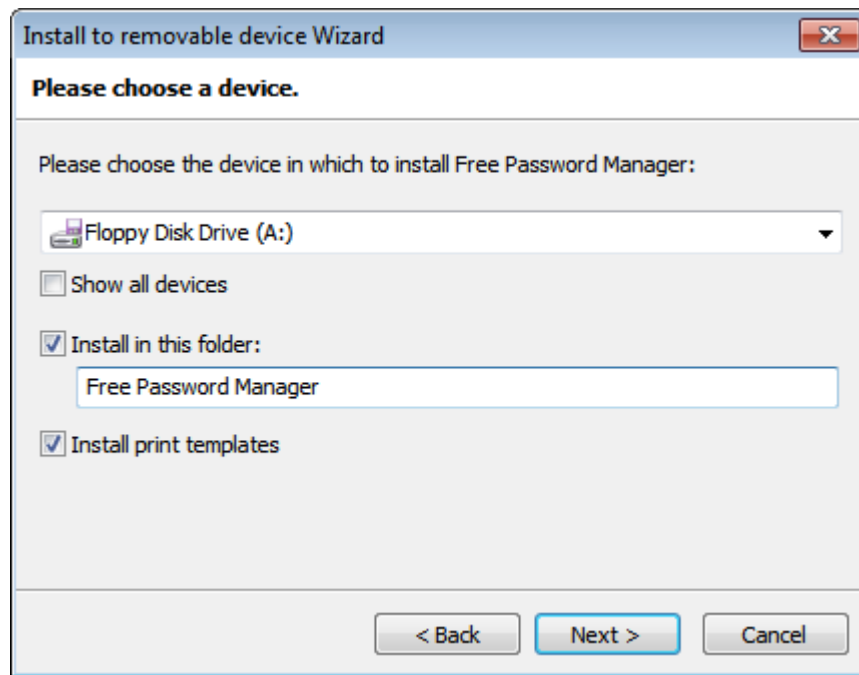
To run the wizard choose **Tools > Install to removable device Wizard...** menu item. The wizard's welcome page will appear. Click **Next** to continue.



On the next page choose the device, in which to install Free Password Manager. You can also set the following parameters:

- **Show all devices** - when this option is selected, the program will display all devices available for the installation of the program, not only removable ones;
- **Install in this folder** - when this option is selected, the program will be installed in the specific folder on the device. Otherwise, the program will be installed in the root folder;
- **Install print templates** - when this option is selected, report templates will be installed on the device.

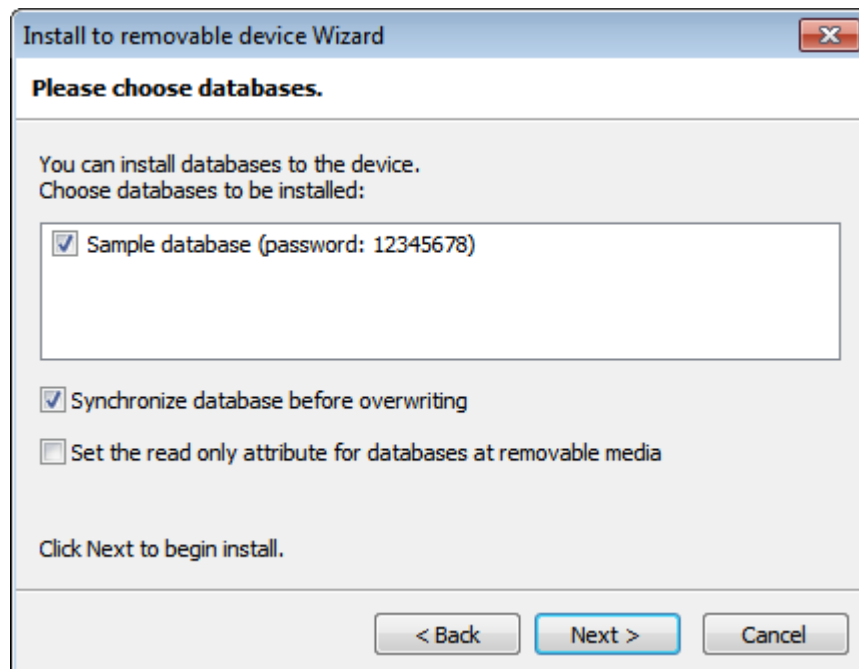
Click **Next** to continue.



On the next page you can choose the databases to be installed to the device. You can also set the following parameters:

- **Synchronize database before overwriting** - when this option is selected, changes in the database located on the device will be copied to the local database. Only when the copying is complete, changes will be saved to the database on the device. This option allows eliminating the risk of losing data when changes are made in both local and remote database located on the device. For more information on synchronization, please read the [Synchronizing database](#) topic.
- **Set the read only attribute for databases at removable media** - when this option is selected, databases installed on the device will have the 'read-only' attribute.

Click **Next** to begin install.



After install process will finish, the device will contain Free Password Manager executable files and chosen databases. To launch the Free Password Manager from device, locate Free Password Manager executable file (**Free Password Manager.exe**) and run it.

**Quick install to removable device:**

To perform quick install you need to run **Install to removable device Wizard** first and configure needed options. When all necessary parameters are set, the quick (silent) installation of the software with the parameters provided during the first run will be performed the next time the **Quick install to removable device...** function is called.

## 3.7. Viewing Action log

Free Password Manager can log the following data changes:

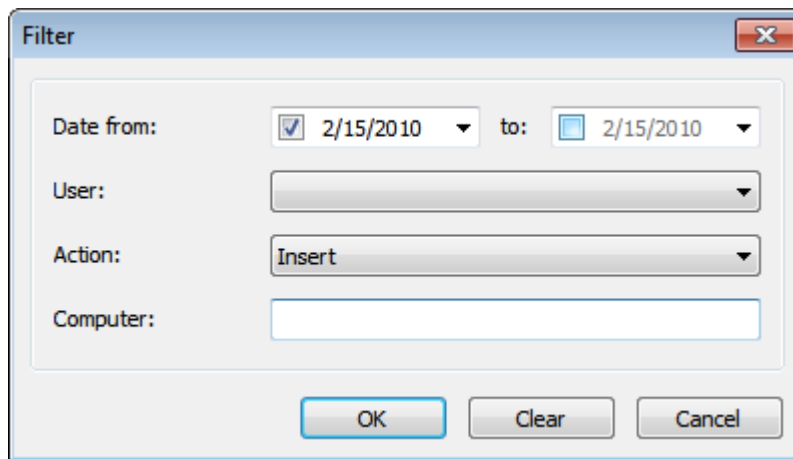
- Insert
- Update
- Delete

See [Parameters](#) page in database properties for information how to enable data changes and user action logging.

To view the actions log, use the menu items **View > Action log...** and **View > Full action log...** The **Action log...** item is designed for viewing actions log for a currently selected record or folder. The **Full action log...** item is designed for viewing the complete actions log for the entire database.

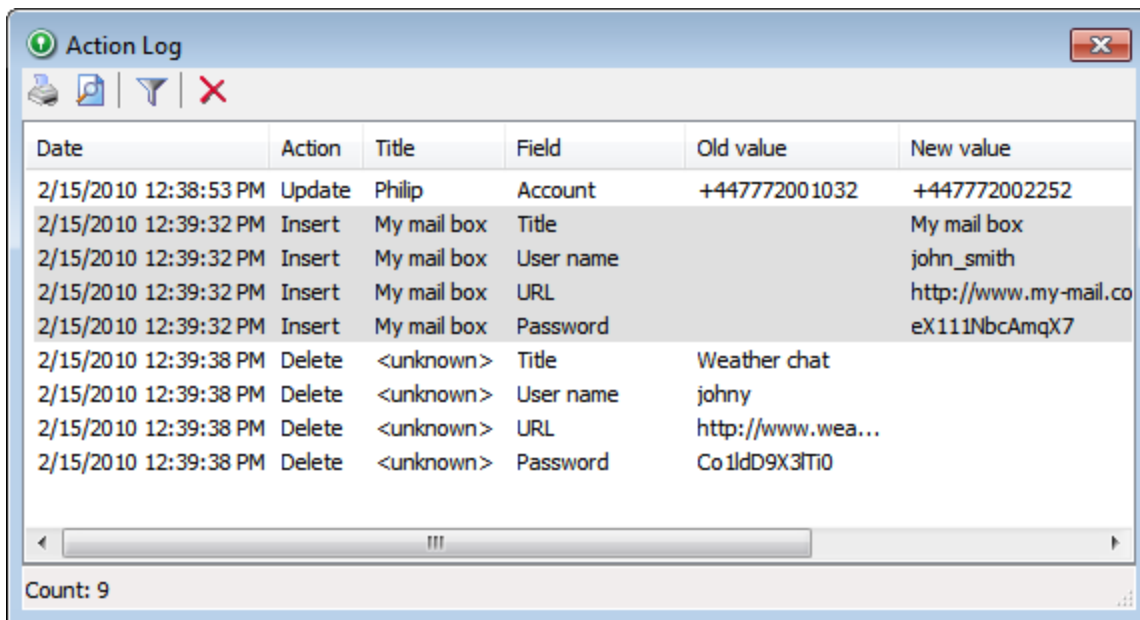
To view actions log, select **View > Full action log...** on the menu. In the window that appears, you can specify filter parameters for the action viewer:

- **Date from** - display actions beginning with this date;
- **Date to** - display actions ending by this date;
- **User** - display actions for this user;
- **Action** - display actions of this type;
- **Computer** - display actions for this computer.



Once the necessary filter parameters are set, click **OK**. The window that appears will display the actions log. The following commands are applicable to actions log:

- **Print** - print selected actions;
- **Print preview** - preview selected actions;
- **Filter** - edit filter parameters for the actions viewer;
- **Delete changes** - delete actions currently being displayed.



Date	Action	Title	Field	Old value	New value
2/15/2010 12:38:53 PM	Update	Philip	Account	+447772001032	+447772002252
2/15/2010 12:39:32 PM	Insert	My mail box	Title		My mail box
2/15/2010 12:39:32 PM	Insert	My mail box	User name		john_smith
2/15/2010 12:39:32 PM	Insert	My mail box	URL		http://www.my-mail.co
2/15/2010 12:39:32 PM	Insert	My mail box	Password		eX111NbcAmqX7
2/15/2010 12:39:38 PM	Delete	<unknown>	Title	Weather chat	
2/15/2010 12:39:38 PM	Delete	<unknown>	User name	johny	
2/15/2010 12:39:38 PM	Delete	<unknown>	URL	http://www.wea...	
2/15/2010 12:39:38 PM	Delete	<unknown>	Password	Co1dD9X3ITi0	

Count: 9

## 3.8. Configuration of Free Password Manager

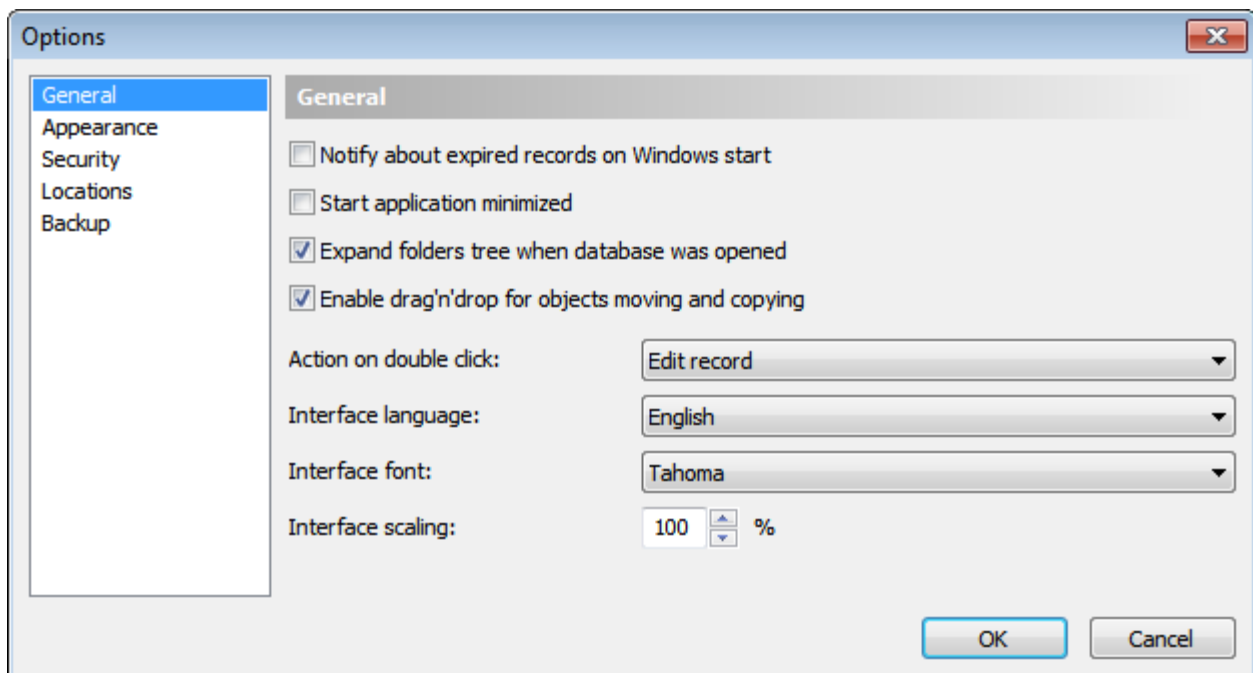
To access Free Password Manager options select **Tools > Options...** from the main menu. Free Password Manager options include the following pages:

- [General](#)
- [Appearance](#)
- [Security](#)
- [Locations](#)
- [Backup](#)



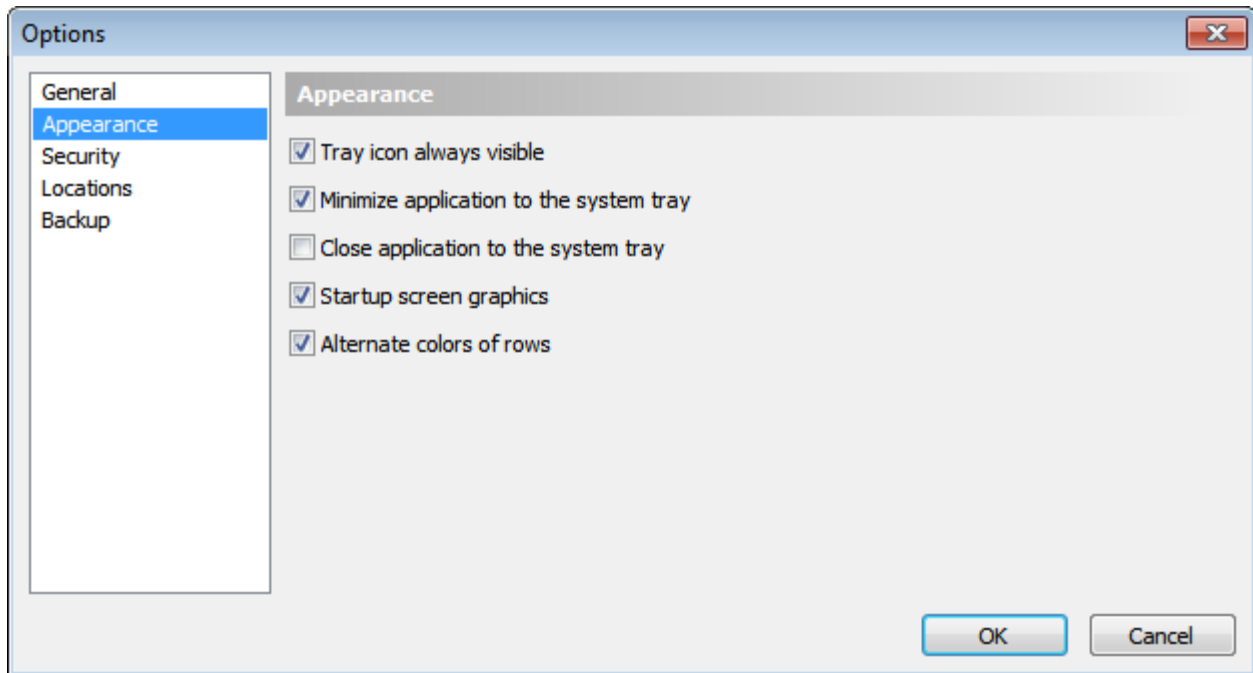
### 3.8.1. General

- **Notify about expired records on Windows start** - when this option is selected user will be notified about all expired records on Windows start.
- **Start application minimized** - when this option is selected, the application will be started in minimized state.
- **Expand folders tree when database was opened** - when this option is selected all folders will be expanded after database was opened.
- **Enable drag'n'drop for objects moving and copying** - when this option is selected a records and folders can be moved and copied using drag'n'drop.
- **Action on double click** - set which action should be performed on a record's double click (**Edit record** or **Copy password to clipboard**).
- **Interface language** - language of Free Password Manager user interface.
- **Interface font** - font of Free Password Manager user interface.
- **Interface scaling** - scaling factor of Free Password Manager user interface (100-800%).



### 3.8.2. Appearance

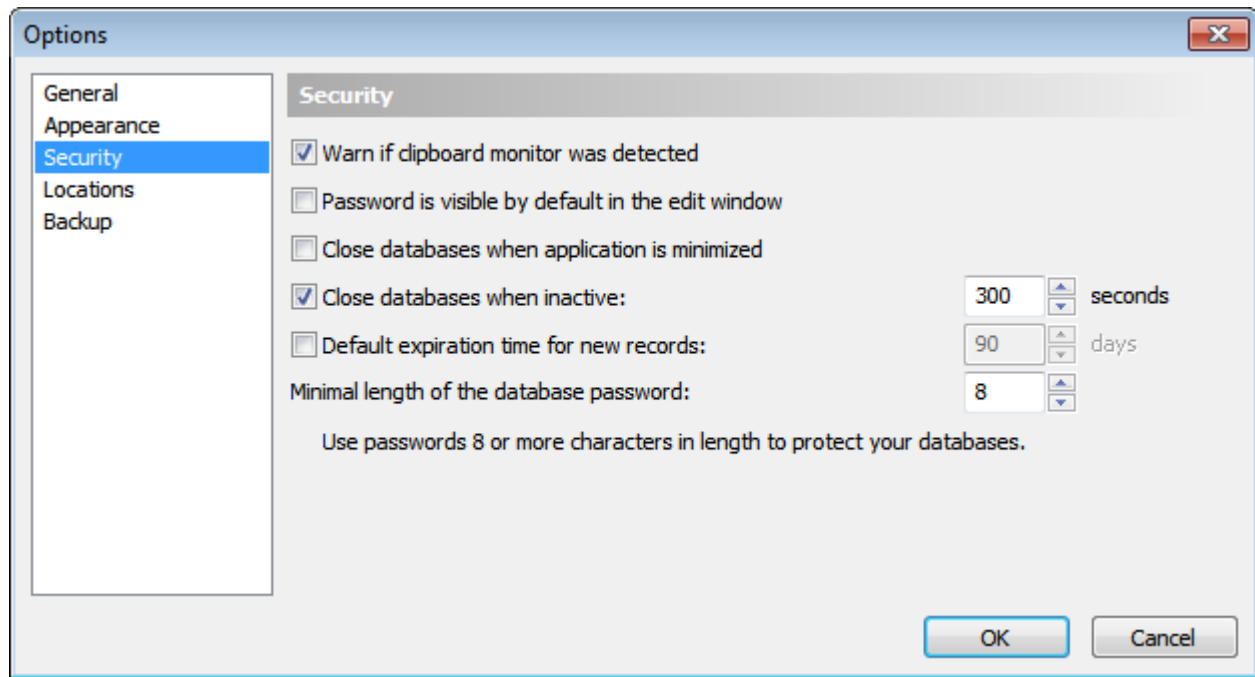
- **Tray icon always visible** - if selected, Free Password Manager icon will be shown in system tray always.
- **Minimize application to the system tray** - this option allows to minimize application to System Tray. Free Password Manager button will not be shown in the system taskbar when the program will be minimized.
- **Close application to the system tray** - when this option is selected, the application will be minimized to System Tray when you press a close button. To quit application you need to choose **Database > Exit** menu item.
- **Startup screen graphics** - when this option is not selected a simple startup screen will be shown. It is useful to simplify startup screen when working in terminal session.
- **Alternate colors of rows** - when this option is selected, even and odd rows in records list will be drawn using slightly different background colors.



### 3.8.3. Security

- **Warn if clipboard monitor was detected** - if some application is monitoring clipboard contents, Free Password Manager will warn you.
- **Password is visible by default in the edit window** - when this option is selected the password fields will be visible when you open edit record dialog.
- **Close databases when application is minimized** - when this option is selected all databases will be closed when Free Password Manager will be minimized.
- **Close database when inactive** - this option forces automatic database closing on expiry of the given time interval. When the database stays inactive for this period of time it will be closed;
- **Default expiration time for new records** - specifies default expiration time for new records;
- **Minimal length of the database password** - specifies minimal allowed length of the database password.

**⚠ WARNING:** Do not use passwords less than 8 characters in length!



### 3.8.4. Locations

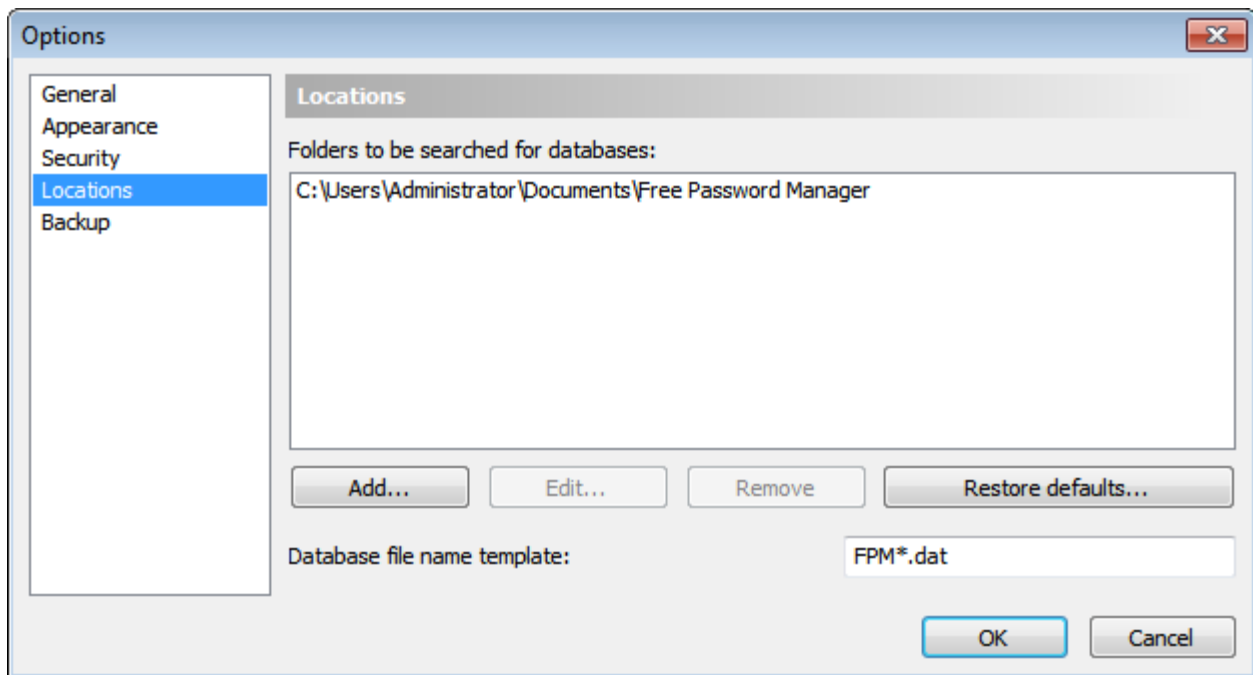
**Folders to be searched for databases** - list of folders that will be searched for databases. UNC paths ( \\Server\Share) are supported here.

To add folder to the list press **Add...** button. To edit selected folder press **Edit...** button. To remove selected folder from the list press **Remove** button.

To access the same database(s) from computers across the network follow this steps:

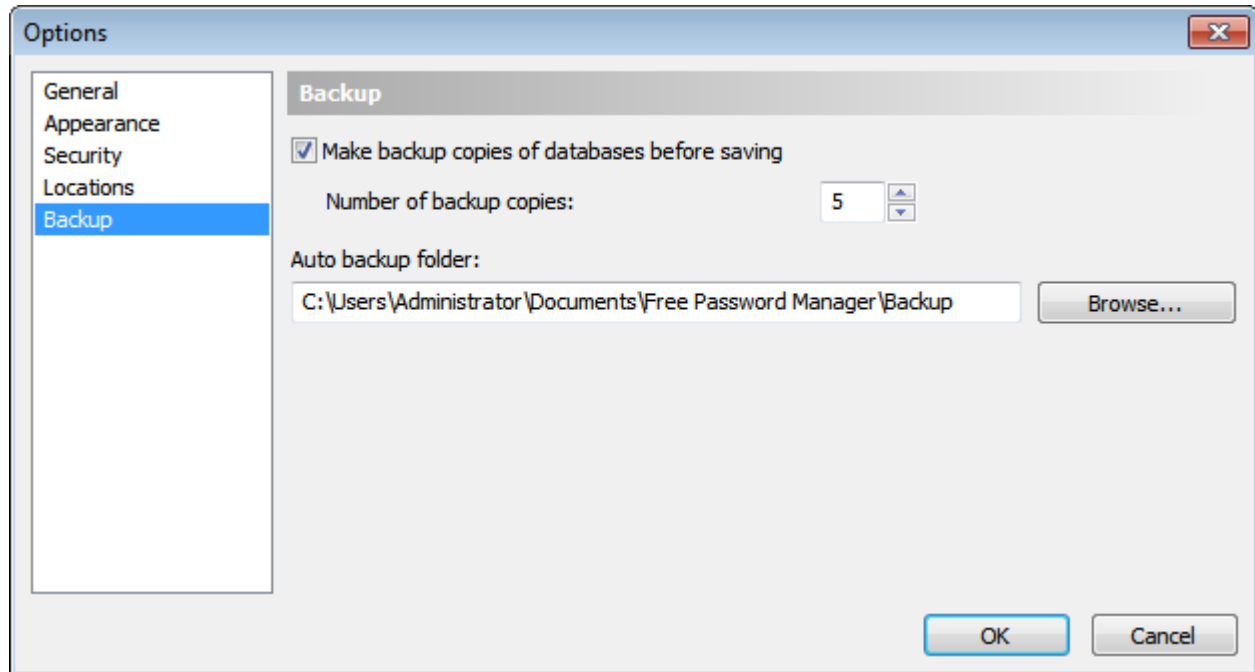
1. Create a network share on some computer.
2. Add path to this shared resource to the list of folders in Free Password Manager.
3. Now you can use existing or create new database(s) at this shared resource.

**Database file name template** - template which is used to create or search database file names. You can change default template to make database file names different from standard.



### 3.8.5. Backup

- **Make backup copies of databases before saving** - when this option is selected the backup copies of the databases will be created each time before saving changes.
- **Number of backup copies** - specifies number of backup copies per each database to maintain;
- **Auto backup folder** - specifies folder where backup copies will be stored.



### 3.9. Command line parameters

The following command line parameters can be used with Free Password Manager:

Parameter	Description
<code>/Add:"&lt;fields data&gt;"</code>	Adds new record to passwords database. <b>&lt;fields data&gt;</b> describes data to be added in the following format: <b>field_name1=field_value1,field_name2=field_value2,...</b> <b>field_name</b> is a name of database's field. The following field names can be used: <b>Title, User, Account, URL, Password, Description, Expires.</b>
<code>/DbName=&lt;name&gt;</code>	Name of a database or name of database file.
<code>/DbPassword=&lt;password&gt;</code>	Password for the database, specified by <b>DbName</b> parameter. If password is not specified it will be prompted.
<code>/DbFolder=&lt;folder_name&gt;</code>	Name of folder inside the database, specified by <b>DbName</b> parameter. If folder is not specified, the root folder will be used.
<code>/Confirm</code>	Allows to review or edit data before adding new record.
<code>/Silent</code>	Do not display any information messages.
<code>/Sync</code>	Synchronize the database, specified by <b>DbName</b> parameter.
<code>/RemotePath=&lt;path&gt;</code>	Path to a folder with remote database for synchronization.
<code>/RemoteDbName=&lt;name&gt;</code>	Name of remote database for synchronization, located in <b>RemotePath</b> folder. If this parameter is omitted, remote database name will be the same as specified by <b>DbName</b> parameter.
<code>/RemoteDbFileName=&lt;file_name&gt;</code>	File name of remote database. <b>RemotePath</b> is ignored.
<code>/TwoWaySync</code>	2-way synchronization of databases. Remote changes are applied to local database and local changes are applied to remote database. Without this option remote database is not modified.

#### Examples:

```
PwdManager.exe /add:"Title=My FTP password, User=jonh, Password=12345678, Expires=12/01/2010" /DbName="My Passwords"
```

This command will add new record to database **My Passwords** and will prompt you for its password if needed. An information message will be displayed at end.

```
PwdManager.exe /add:"Title=My FTP password, User=jonh, Password=12345678" /DbName="My Passwords" /DbPassword=myspassword /DBFolder=Web /silent
```


This command will add new record to database **My Passwords** to folder **Web**. The **myspassword** password will be used to open the database. No information messages will be displayed.

```
PwdManager.exe /sync /dbname="My Passwords" /remotepath="\\server\dbs" /twowaysync
```

This command will synchronize local database **My Passwords** with server copy, located in folder **\\server\dbs**.

### 3.10. Setup program's command line parameters

Setup program's command line parameters can be used for the unattended installation.

 **NOTE:** The command line parameters are case-sensitive.

**/S** - setup will not prompt user for anything. The installation will be performed to the folder "`Program Files\Free Password Manager`".

**/A** - Free Password Manager will be installed for all users on this computer.

**/NoSampleDB** - do not install sample database.

**/NoMultiLang** - do not install multilingual support.

**/NoDocs** - do not install documentation.

## 4. Technical support

You can [send a message](#) to our technical support team with your bug reports. All errors found will be corrected as soon as possible.

Technical support for Free Password Manager is provided via electronic mail solely.

Please provide us with the following information when contacting tech support:

- problem description along with the actions being taken before the problem occurred;
- Free Password Manager version;
- your operating system version (9x, ME, NT, 2000, XP, 2003, Vista).